

How we work & what we need

m o o o i
carpets

1. fotorealistic designs

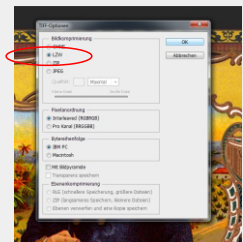


1.1. File format:

We work with Photoshop CS6.

Please deliver **Tif-files**, **reduced to one layer**, **LZW-compressed**.

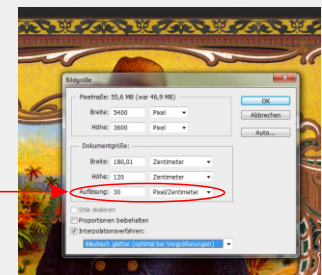
Please be aware, that Photoshop CS6 is limited to 30.000 x 30.000Px (in our resolution 10x10 meters).
Contact us for bigger designs!



1.2.Resolution:

Our printing machine works with 30Px per centimeter, what is appox. 76,2 dpi.

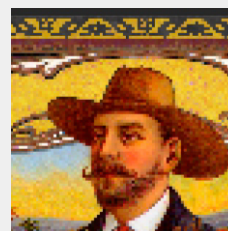
Please provide us Tif-files with **resolution 30Px/cm!**



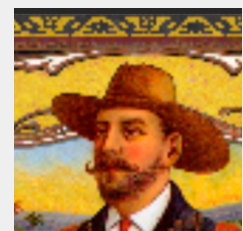
Please be aware that you need a highly resolved basic-file to get an optimal result.
e.g.: If the carpet shall be 300x200cm we need a Tif from you with 9000x6000Px.
If you don't have such a high resolution in your basic file (e.g. a photographic picture) you will have to increase it, for example in Photoshop. Depending on the factor of increasing and the technique, the result will be more or less satisfying:



original
(to small)



bigger, but pixelated!



bigger, but blurred!

1.3.Colours: We need your Tif-files in **RGB**, profile **Adobe 1998!**



How we work & what we need

m o o o i
carpets

full colour designs / example on carpet

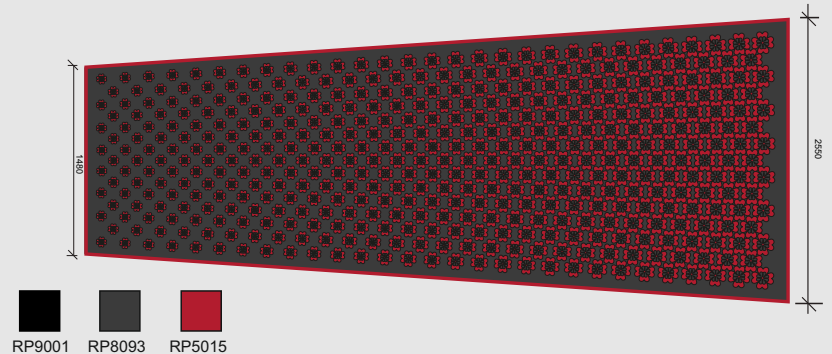
High resolution in basical file.
Design was **not** increased in photoshop.
Result: detailed drawing
Please see the result on carpet!!



Low resolution in basical file.
Design was increased in photoshop, interpolation „hard edges“
Result: pixelated, less details
Please see the result on carpet!!

Low resolution in basical file.
Design was increased in photoshop, interpolation „bubic“
Result: blurred, less details
Please see the result on carpet!!

2. grafic designs with definable colours



1.1. File format:

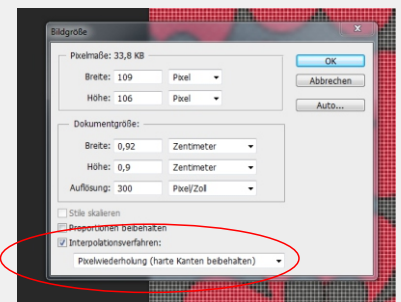
We need your data without any structure in the defined colours, to be able to recolour the design!!!

We work with Adobe Illustrator CS6 and Photoshop CS6, so you have two options what files you deliver to us:

- **Ai-files**
- **Tif-files, reduced to one layer, LZW-compressed.**

Attention: You have to generate Tif-files without any structure in the single colours, what means:

- **No „anti alias“** in AI or PS!!!
- When you increase files in Photoshop choose interpolation „**pixelrepeating / hard edges**“



1.2.Resolution:

Our printing machine works with 30Px per centimeter, what is appox. 76dpi.

Please provide us all files (Ai-files and Tif-files!) with **resolution 30Px/cm!**

1.3.Colours: We need all your files in **RGB**, profile **Adobe 1998!!**

